



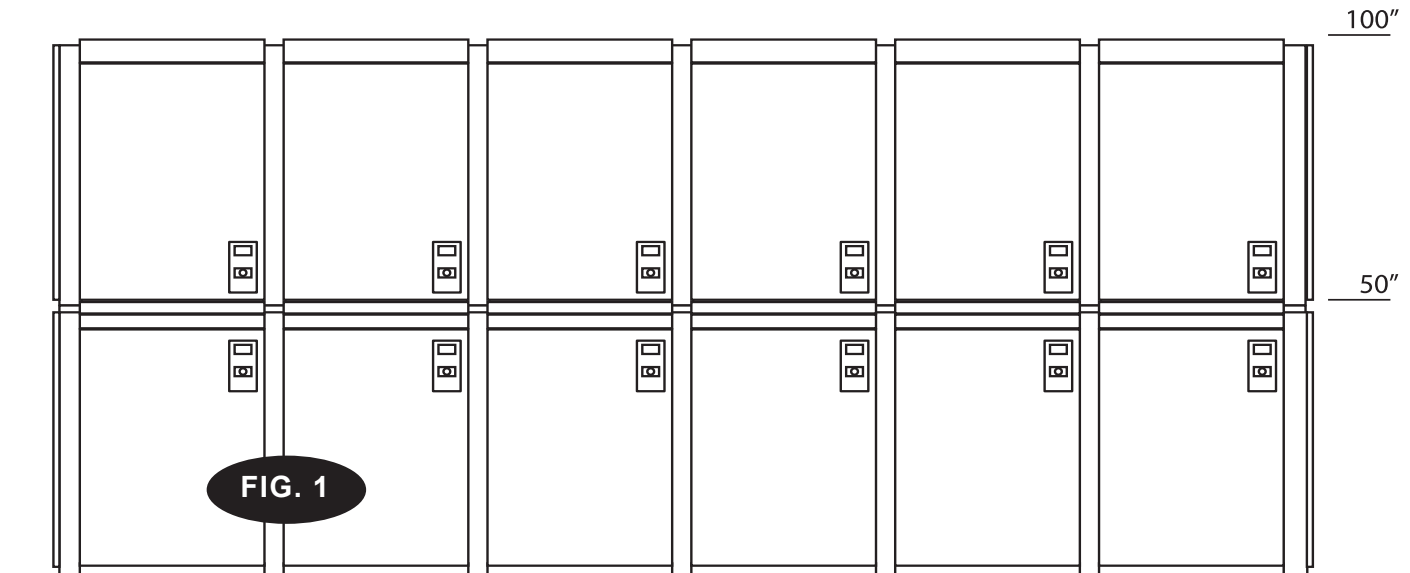
Cycle-Safe[®]
SECURE BICYCLE PARKING



**Designed for flexibility...
Engineered to last.**

Two-Tiered Locker Installation — Supplement to ProPark™ Owners Manual

TWO-TIERED LOCKER LAYOUT



Cycle-Safe's **modular design** allows expandability so you can start small and expand the system easily as your budget allows.

The Cycle-Safe two-tiered bicycle storage system doubles parking availability without taking up more property. The photos and drawing here show one row of twelve units double-tiered, which results in 24 individual lockers in just three parking spaces!



CONTENTS:

Overview	2
Parts List	3
Assembly Sequence	4
General Notes	4

System Assembly

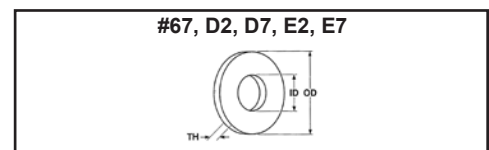
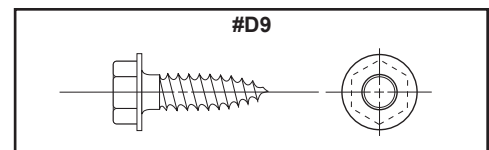
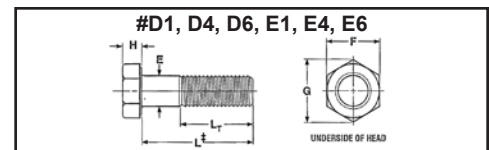
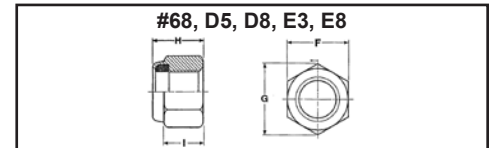
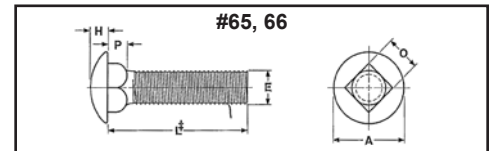
B. Install Center Support Blocks	5
C. Install Horizontal Frame Filler	5
D. Install Second-Tier Leveling Plates	5
E. Install Second-Tier Frame Assemblies	6
F. Install Left & Right Corner Support Blocks	6
G. Install Second-Tier End Panels	6
H. Install Second-Tier Top Panels	7
I. Install Diagonal Partitions	7
J. Install Second-Tier Doors	7
K. Install Door Sill Plates	7
L. Final Squaring and Adjusting	7
M. Install Door Check Kits	8, 9
Special Notices and Contact Information	10

All contents of this manual ©2007, Cycle-Safe Corporation.

PARTS LIST

NOTE: “Key Numbers” shown below along with the list from the ProPark® Installation Manual are referenced throughout this document.

KEY No.	Description	Part No.
50	Door assembly, second tier modified lock/latch	11701
54	Horizontal frame filler	11030
55	Center Support Block	11050
56	End Panel Support Block - Left	11055
57	End Panel Support Block - Right	11056
58	Door Sill Plate	11013
62	Door Check Hold Back Kit (contents of kit also listed on page 8)	10635
61	Door check spring assembly	10632
63	Long L angle flange 2 1/4" x 1 5/8" x 15" – pre drilled	11016
64	Short L angle flange 2 1/2" x 1 5/8" x 3 1/2" – pre drilled	11018
65	(2) 1/4" x 3" SS carriage bolts	10637
66	(2) 1/4" x 3 1/2" SS carriage bolts	10634
67	(4) 1/4" I.D. washers	10636
68	(4) 1/4" Nylock nuts	10638
69	(2) 2 3/8" Nylon sleeves – use with short flange	10633
70	(2) 2" Nylon tube sleeve spacers – use with long flange	10639
80	Hardware Kit D (one kit needed for each starter unit)	11100
D1	(4) 3/8" x 3" SS hex head cap screws	11101
D2	(16) 3/8" SS flat washers	11102
D4	(4) 3/8" x 4" SS hex head cap screws	11104
D5	(8) 3/8" Nylock nuts	11105
D6	(4) 5/16" x 2" SS hex head cap screws	11106
D7	(4) 5/16" SS flat washers	11107
D8	(4) 5/16" SAE-type Nylock nuts	11108
D9	(8) 5/16" x 1-1/4" hex head sheet metal screws	11109
85	Hardware Kit E (one kit needed for each adder unit)	11200
E1	(2) 3/8" x 4" SS hex head cap screws	11201
E2	(4) 3/8" SS flat washers	11102
E3	(2) 3/8" SAE Nylock nuts	11105
E6	(4) 5/16" x 2" SS hex head cap screws	11106
E7	(4) 5/16" SS washers	11107
E8	(4) 5/16" SAE-type Nylock nuts	11108



TOOLS REQUIRED

...are the same as those noted for the First Tier Assembly in the ProPark® Owners Guide, **plus** one (1) 7/16" Drill Bit, a Phillips-head screwdriver, and a bar of soap.

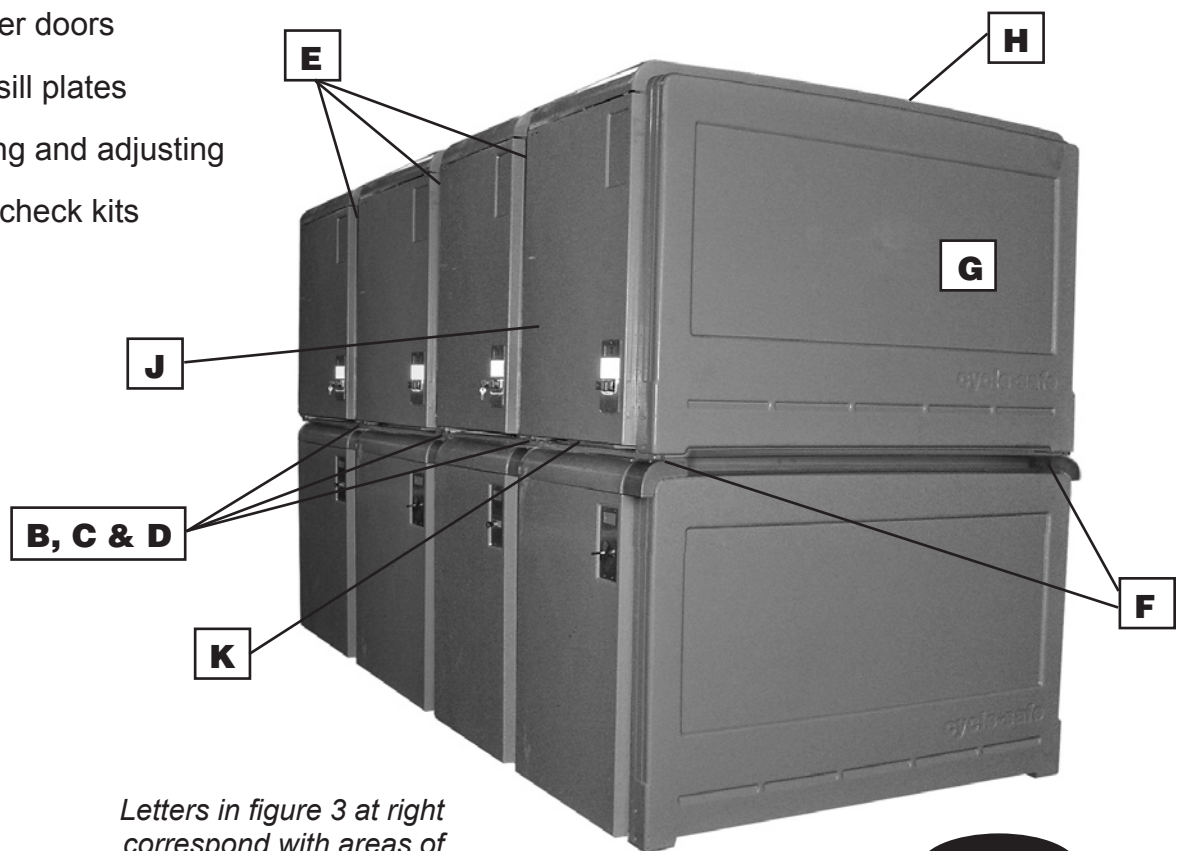
ASSEMBLY SEQUENCE

- A.** Build first-tier locker row. Plumb and true assembly according to the Installation Guide and Owners Manual ProPark® Series. **(Attachment and operation of second-tier lockers will go better if first-tier lockers are installed level and plumb.)**
- B.** Install center support blocks
- C.** Install horizontal frame filler
- D.** Install 2nd-tier leveling plates
- E.** Install 2nd-tier frame assemblies
- F.** Install left & right corner support blocks
- G.** Install 2nd-tier end panels
- H.** Install 2nd-tier top panels
- I.** Install diagonal partitions
- J.** Install 2nd-tier doors
- K.** Install door sill plates
- L.** Final squaring and adjusting
- M.** Install door check kits

Read all instructions prior to assembly!

NOTE: Custom doors are furnished for the second tier. (Door boxes should be properly identified.) Locking mechanism for the custom doors is located in the lower right corner of the door assembly. (See figure 3 below.)

NOTE: PRIOR TO INSTALLATION run each bolt through a **bar of soap**. This will allow the nylock nut to connect with the fastener easier, minimizing the amount of force applied to the bolt and preventing any of the bolts from breaking.



Letters in figure 3 at right correspond with areas of installation where tasks above are described.

FIG. 3

B. Install center support blocks (55)**C. Install horizontal frame filler(s)** (54)**D. Install second-tier leveling plates** (9)**Materials:**

Center Support Blocks (55)

Leveling plate (9)

3/8" x 4" SS hex head cap screw E (1)

3/8" SS flat washers E (2)

3/8" Nylock nuts E (3)

Horizontal Frame fillers (54)

See "soap" note on page 2 before proceeding.

STEP 1:

Drill a hole in the first-tier horizontal frame using a 7/16" drill bit. The hole should be 1-5/8 inches from the front edge of the frame. (The pre-drilled holes in the center support block (55) should be precisely 1-5/8 inches from the edge of the frame. Use the support block as a template if necessary.)



FIG. 4 Center Support Block properly aligned.

STEP 2:

Line up a center support block (55) on the edge of the first-tier frame assembly where the vertical and horizontal frame meet. The block will nest securely between the top panels and fit flush with the front of the top panel. (See figure 4) The pre-drilled hole should line up with the hole drilled in Step 1. Repeat on the opposite side. (Do not secure with hardware yet.)

NOTE: Be sure the center block is pushed back so that it does not "hang" below the bottom edge of the top panel - otherwise it will interfere with opening of the first tier door.

NOTE: There is one specific position for each Support Block (Left, Right, and Center). The blocks are uniquely molded to fit flush with the ridges of the end panels and frame assemblies. The top of the block will be flush with the edge of the top panel. The blocks are embossed with an L, R, or C.

STEP 3:

Line up the second-tier leveling plate (9) over the pre-drilled hole in the center support block (55). Using a 3/8" x 4" SS hex head cap screw E (1), 3/8" SS flat washers E (2) and 3/8" SAE Nylock nut E (3), secure the second-tier leveling plate and center support block (55) to the first-tier horizontal frame. One washer is positioned next to the head of the bolt and one washer is positioned next to the nylock nut. Repeat for each center support block.

STEP 4:

Position the horizontal frame filler (54) over the first-tier horizontal frame. It will nest between the two center support blocks and fit flush with the top panels (see figure 5). No hardware is needed to hold the filler in place, as the second-tier frame assembly (once installed) will secure the filler.

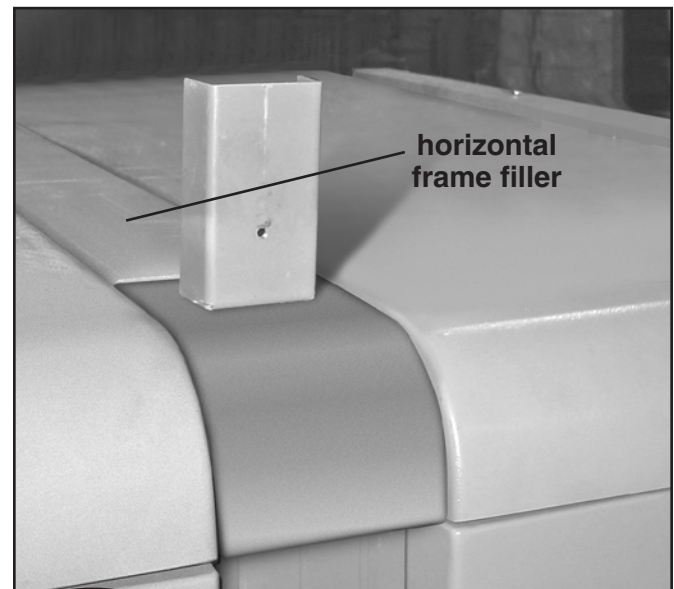


FIG. 5 Position of horizontal frame filler.

E. Install second-tier frame assemblies (2) & (3)**F. Install Left & Right Corner Support Blocks** (56) & (57)**G. Install second-tier end panels** (8)**Materials:**

- Left support blocks (56)
- Right support blocks (57)
- 3/8" x 3" SS hex head cap screw D (1)
- 3/8" SS flat washer D (2)
- 3/8" x 4" SS hex head cap screw D (4)
- 3/8" Nylock nut D (5)
- 5/6" x 1-1/4" sheet metal screw D (9)

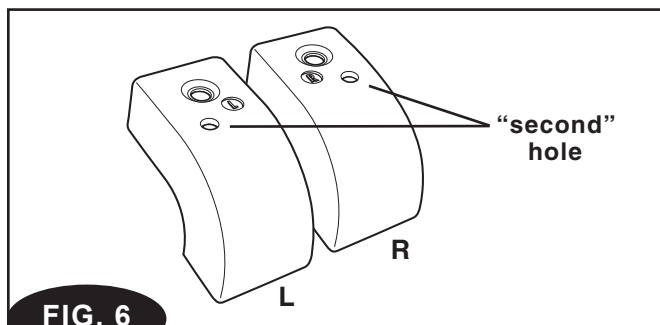
See "soap" note on page 2 before proceeding.

STEP 1:

Install second-tier frame assemblies (2) & (3) onto leveling plates. Refer to frame assembly instructions on page 17 and 18 of the ProPark owners manual.

STEP 2:

Line up the two left (56) and two right (57) corner support blocks on the outside corners of the first-tier end panels. The blocks will rest flush with the top panel and ridges of the end panel. Using a 7/16" drill bit, drill a hole through the end panel using the second hole position as a template. (See figure 6.) Drill out only the second hole position at this time. Secure each block to the end panel using a 3/8" x 3" SS carriage bolt D (1), two 3/8" flat washers D (2) and a 3/8" Nylock nut D (5). Position one washer next to the head of the bolt and a second washer next to the nylock nut. Repeat for each corner.

**FIG. 6****STEP 3:**

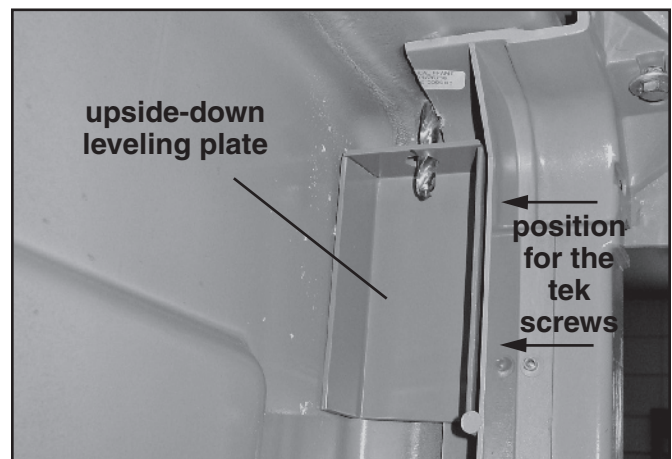
Drill a hole in the end panel using the first pre-drilled hole of the support block as a guide. Use a 7/16" drill bit. Repeat for each corner block.

STEP 4:

Line up second-tier end panels (8) (leveling plates pre-installed) with the holes drilled in Step 3. Place a 3/8" x 4" SS hex head cap screw D (4) and 3/8" washer D (2) down through the hole in the leveling plate. Do not secure yet.

STEP 5:

Position a second leveling plate (9) inside the end panel (upside down) so the bolt from Step 4 goes through the hole of the leveling plate. (See figure 7) Use a second 3/8" washer D (2) and 3/8" Nylock nut D (5) to secure the end panel. Repeat on each corner.

**FIG. 7****STEP 6:**

Secure the upside-down leveling plate to the end panel using two 5/16" tek screws D (9). Position screws so they go through the frame into the leveling plate. (See figure 7.) Repeat for each leveling plate.

- H. Install second-tier top panels** ①
- I. Install diagonal partitions** ⑥
- J. Install second-tier doors** ⑤⑩
- K. Install door sill plates** ⑤⑧
- L. Final adjustments and squaring**

NOTE: Be sure to use the custom doors for the top tier. The pop out t-handle is in the lower right corner of the door.

Materials:

- Second-tier top panels ①
- Diagonal partitions ⑥
- Second-tier doors ⑤⑩
- Door sill plate ⑤⑧
- 5/16" x 2" SS hex head cap screws D ⑥ or E ⑥
- 5/16" SS washers D ⑦ or E ⑦
- 5/16" Nylock nuts D ⑧ or E ⑧

See "soap" note on page 2 before proceeding.

STEP 1:

Install second tier top panels ①. Refer to page 18 of the ProPark Owners manual for proper assembly instructions.

STEP 2:

Install diagonal partitions ⑥ following assembly instructions on page 19 and 20 of the ProPark owners manual.



FIG. 8

STEP 3:

Install the second-tier doors ⑤⑩ following the installation instructions on page 21 of the ProPark Owners manual

STEP 4:

Position the door sill plates ⑤⑧ directly in front of the door between the "ears" of the vertical frames. (See figure 8) Close the locker door. This should adjust the sill plate to the correct position. Open the door and mark the top of the roof panel using the two pre-drilled holes in the sill plate as a template. Drill holes in the top panel using a 5/16" drill bit. Make sure you are not interfering with any ribbing beneath the top panel. Secure the sill plate to the top panel with a 5/16" x 2" Hex Head Cap Screw D ⑥ or E ⑥, 5/16" SS washers D ⑦ or E ⑦ and 5/16" SAE-type Nylock nut D ⑧ or E ⑧. Repeat for each sill plate.

STEP 5:

Make sure door closes properly and the sill plate fits securely when the door is closed. If there is interference. Remove the sill plate and enlarge the pre-drilled holes. Adjust the sill plate accordingly and secure the top panel.

STEP 6:

Final Squaring and adjusting of the second tier. Refer to pages 22 and 23 of the ProPark Owners manual.



Cycle-Safe[®]

SECURE BICYCLE PARKING

Ada, Michigan 49301

P: 888-950-6531 or 616-954-9977

F: 616-954-4290

**Assembly of materials and specifications
herein are subject to change without notice.**

**PLEASE FORWARD THIS INSTRUCTION
BOOKLET TO THE LOCKER SYSTEM
ADMINISTRATOR.**

